



**FISHERIES ADMINISTRATIVE
ORDER NO. 238 :
Series of 2012**

SUBJECT : Rules and Regulations Governing the Implementation of Council Regulation (EC) No. 1005/2008 on the Catch Certification Scheme

Whereas, the European Union (EU) adopted Council Regulation (EC) No. 1005/2008 on September 29, 2008, establishing a catch certification scheme for all marine fishery imports into the Community and Council Regulation (EC) No. 1010/2009 on October 22, 2009, providing its implementing rules;

Whereas, Article 12 of Council Regulation No. 1005/2008 prohibits the importation into the Community of fishery products obtained from illegal, unreported and unregulated (IUU) fishing and that fishery products shall only be imported into the Community when accompanied by a catch certificate validated by the flag State of the fishing vessel or fishing vessels which made the catches from which the fishery products have been obtained, certifying that such catches have been made in accordance with applicable laws, regulations and international conservation and management measures;

Whereas, the EU is one of the Philippines' largest markets and importers of fishery products;

Whereas, the Country Evaluation Report of the EU of its evaluation of the Philippines' implementation of Council Regulation No. 1005/2008 undertaken on June 6 to 17, 2011, as part of the project entitled "*Accompanying developing countries in complying with the implementation of Regulation No. 1005/2008 on illegal, unreported and unregulated fishing,*" proposed several recommendations to enhance the country's implementation of said regulation;

Wherefore, in view of these premises, the following rules and regulations on the implementation of Council Regulation (EC) No. 1005/2008 is hereby adopted and promulgated for the information and compliance of all concerned.

**CHAPTER I.
General Provisions**

Section 1. Objectives. These rules and regulations aim to:

1. Comply with the provisions of Council Regulation No. 1005/2008 and its Implementing Guidelines.

2. Ensure traceability of fishery products derived from legal, reported and regulated fishing activities in the Philippines, at all stages from harvesting and processing to marketing;
3. Establish a mandatory set of procedures for the catch certification scheme; and,
4. Ensure that fishery products exported to an EU-member country originate from catches made in compliance with applicable laws, regulations or conservation and management measures.

Section 2. Definition of Terms. For purposes of this Order, the following terms, phrases and acronyms shall mean:

- a. **Consignment** – products which are either sent simultaneously from one exporter to one consignee or covered by a single transport document covering their shipment from the exporter to the consignee;
- b. **DA-BFAR** – Department of Agriculture-Bureau of Fisheries and Aquatic Resources;
- c. **EU** – European Union which is also synonymous to European Community;
- d. **Fishery products** – marine aquatic species, in whatever form/state, which are not included in Annex I of Commission Regulation No. 86/2010. Said Annex I is reproduced as Annex 8 of this Administrative Order
- e. **Fishing** – the taking of fishery species from their wild state or habitat, with or without the use of fishing vessels;
- f. **Illegal fishing** - fishing conducted by national or foreign vessels in waters under the jurisdiction of a State, without the permission of that State, or in contravention of its laws and regulations; conducted by vessels flying the flag of States that are parties to a relevant RFMO but operate in contravention of the conservation and management measures adopted by that organization and by which the States are bound, or relevant provisions of the applicable international law; or in violation of national laws or international obligations, including those undertaken by cooperating States to a relevant RFMO;
- g. **IFP** – International Fishing Permit;
- h. **IUU Fishing** – illegal, unreported and unregulated fishing;
- i. **RCC** – Regular Catch Certificate
- j. **RFMO** – Regional Fisheries Management Organization
- k. **SCC** – Simplified Catch Certificate

- l. Traceability** - the ability to trace and follow a fishery product through all stages of fishing, storing, transporting, processing and distribution;
- m. Transshipment** - the unloading of all or any of the fish on board a fishing vessel to another fishing vessel either at sea or port as defined in the IUUF Regulation.
- n. Unreported fishing** - fishing which have not been reported, or have been misreported, to the relevant national authority, in contravention of national laws and regulations; or undertaken in the area of competence of a relevant RFMO which have not been reported or have been misreported, in contravention of the reporting procedures of that organization;
- o. Unregulated fishing** - fishing in the area of application of a relevant RFMO that are conducted by vessels without nationality, or by those flying the flag of a State not party to that organization, or by a fishing entity, in a manner that is not consistent with or contravenes the conservation and management measures of that organization; or in areas or fish stocks in relation to which there are no applicable conservation or management measures and where such fishing activities are conducted in a manner inconsistent with State responsibilities for the conservation of living marine resources under international law;
- p. IUUF Regulation** – European Council Regulation No. 1005/2008;

Section 3. Application. This Order shall apply to all Philippine-flagged fishing vessels that either directly supplies raw materials to EU-member countries or supply raw materials to canneries, processors or exporters for processing prior to the export of the processed fishery products to EU-member countries. This Order shall also apply to canneries, processors, and exporters which are exporting fishery products to EU- member countries.

Section 4. Declaration of Catch Landing and Transshipment. To ensure that the objectives of this Order are realized, catch landing and transshipment must always be recorded or declared.

- a.) Landing of catches shall be verified and certified by authorized BFAR personnel in a Catch Validation Certificate described in Section 13 and Annex 6 of this Administrative Order;
- b.) Transshipment shall be declared and reported by the vessel captain in a Transshipment Certificate described in Annex 5 of this Administrative Order.

Section 5. Prohibition. No fish or fishery products caught or taken by means of IUU fishing or without complete traceability in all its stages from fishing or gathering, storage, transporting, processing up to distribution shall be exported to EU-member countries. Export of fishery product/s to EU-member countries shall only be allowed if supported by a Catch Certificate, which has been validated by DA-BFAR.

Section 6. Sanctions. Non-compliance to the provisions of this Order or providing false information in the Catch Certificate and its documentary requirements shall be a ground for the non-issuance of Catch Certificate, delisting from the list of EU-accredited exporters and the filing of criminal complaint for violation of the rules on exportation.

CHAPTER II The Regular Catch Certificate (RCC)

Section 7. Scope. This Chapter applies to catches obtained by fishing vessels that fall under the following criteria:

1. Fishing vessel with an overall length of more than 12 meters without towed gear or
2. Fishing vessel with an overall length of more than 8 meters with towed gear or with superstructure, or
3. Fishing vessel of more than measured 20 GT.

Section 8. Classifications of RCC. An RCC must only be accomplished by a fishing company. It is classified into:

1. Mother Catch Certificate – RCC issued at landing or prior to processing; or,
2. Consignment Catch Certificate – RCC issued after processing of catch in canneries or processing plants.

Section 9. Requirements. The following are the requirements for the issuance of RCC:

1. Duly accomplished fishing vessel logsheets, which must bear the signature or stamp of the vessel captain),
2. Copy of the Commercial Fishing Vessel/Gear License (CFVGL), and Certificate of Ownership (CO) and Certificate of Vessel Registry (CVR),
3. Transshipment Certificate issued by the fishing vessel captain and printed in paper bearing fishing company logo, accompanied with the fish carrier's Stowage Plan (if transshipment at sea or at port occurred),
4. Catch Validation Certificate issued by the concerned BFAR Regional Office,
5. Original copy of Fish summary/sizing report which must be signed by the authorized representatives of the fishing company and the cannery).

Section 10. Additional Requirements. In addition to the requirements in Section 10 hereof, the following requirements for the issuance of RCC are applicable to Philippine-flagged fishing vessels operating in the waters of Papua New Guinea (PNG):

1. Copy of IFP;
2. Copy of fishing license from PNG;
3. Original or authenticated copy of Fish Origin Declaration Form issued by the National Fisheries Agency of PNG,

Section 11. Instructions in Accomplishing the Regular Catch Certificate.

1. The boxes, “**document number**” and “**validation authority**,” are used to identify the document and the authority which validates it, and are therefore reserved for this purpose and must be filled in only by BFAR which is the validating authority;
2. The “**document number**” shall include the following:
 - a. “ISO code for each Flag State” (608 in the case of the Philippines);
 - b. “Identifying code for the competent authority” (BFAR + Region);
 - c. “Company code”;
 - d. “Year of validation”; and,
 - e. “Number in continuous series”.
3. An example of a document number is “**608-BFAR12-FFC-2011-0001**,” which is filed by Frabelle Fishing Corporation (FFC) in BFAR Region 12 and validated by that region. Annex 4 contains the list of codes of commercial fishing companies in the Philippines;
4. The information required in the box, “**Validating Authority**” such as “Name”, “Address”, “Tel” and “Fax” pertain to and shall be filled up by the BFAR, which information is specific to the concerned BFAR Central or Regional Office;
5. The box, “**Vessel Details**,” shall contain the details of the vessel, which shall be based on the information stated in the vessel’s Commercial Fishing Vessel/Gear License (CFVGL). For a fishing vessel operating in PNG waters, the box on “Fishing License-Valid to” shall contain the IFP number, the IFP’s expiry date, the vessel’s PNG number and expiration date of its PNG license;
6. The box, “**Description of Product**”, refers to the product form, such as, *frozen fish, canned tuna*, and the like. For the box “Type of processing authorized on board”, the applicable terms shall be *freezing, brine freezing, ice chilling* and similar processing terminologies;
7. The “**Species Name and Product Code**” refer to the species’ English name, scientific name and the product code respectively. The product code is based on its six-digit tariff code under the Harmonised System, which is made available online by the EC through the website <http://mkaccdb.eu.int> on the page on Applied Tariff Database. To illustrate, for frozen skipjack, the scientific name shall be *Katsuwonus pelamis* and the product code shall be 0303.43;
8. The box, “**Catch area and Dates**,” shall indicate where and when the catches were made. The catch area may either be the *Philippine EEZ* or *Philippine Archipelagic Waters (Philippine AW)*, *High Seas* or *Coastal State EEZ* (such as *PNG EEZ*), while the dates refer to the dates when the catches were made as reflected in the logsheet;

9. The box "**Estimated weight to be landed**" shall be filled in if all the fish from one landing, either in the flag State or another port State, is exported to the EU in one consignment. The "**Estimated weight to be landed,**" is the weight in kilograms, to be filled out by the fishing company, which may only be estimates of the gross weight to be landed;
10. In all other cases, for instance when fish is exported live or when only part of the landed catch is exported or when products are processed in the flag State prior to exportation to the EU, the box "**Estimated live weight**" should be used and only the weight of the product to be exported should be included in the box "**Estimated live weight.**" This portion shall be left blank in the Mother CC and shall only be filled up with the actual weight of the consignment in the Consignment CC;
11. The box, "**Verified weight landed (kg) where appropriate,**" shall be filled in only by BFAR after validation of the total weight of the consignment by designated BFAR personnel at landing. The verified weight shall also be reflected in the Catch Validation Certificate. If landing is carried out in the port of PNG, the weight shall be based on the Fish Origin Declaration Form or fish summary/sizing report;
12. The box, "**Reference of applicable conservation and management measures,**" refers to the conservation and management measures for the species for which the catch certificate is being issued. It can either be measures adopted by the flag State or by an RFMO to which the flag State is a party. A brief description of the measure should be given such as, quota, restricted fishing gear or subject to fishing license. References must be cited, for instance, for catches of skipjack, yellowfin or bigeye, WCPFC and FAO 226 shall be stated, while FAO 167 shall be stated for catches of sardines and the like. In the case of tuna purse seine vessels, CMM 2008-01 shall also be cited. This box shall be filled out by the operator;
13. The boxes, "**Name of Master of Fishing Vessel – Signature – Seal,**" shall be filled out, signed and sealed or stamped by the captain/master of the fishing vessel or a duly designated/authorized representative of the fishing company. In case where the catches are not landed in a port of the flag State, the duly designated or authorized representative of the fishing company may sign in this box and have the same validated by designated BFAR personnel of the nearest BFAR Office. Only the names of the duly designated/authorized representative which were submitted by the fishing companies to BFAR prior to January 1, 2010, together with a copy of the representative's company identification card, six specimen signatures and a sample of the stamp or seal shall be recognized. Amendments to the list of representatives must be with prior notice to BFAR and must be supported with the requirements. Electronic transmission shall be considered in the future and shall be developed for the purpose of ease and convenience of the transaction without compromising security;
14. The box, "**Declaration of Transshipment at Sea,**" shall be filled up jointly by the masters of the fishing vessel and the receiving vessel or their authorized

representatives. A copy of the Transshipment Certificate evidencing the act of transshipment at sea shall be submitted to the BFAR Regional Office where the fish is to be finally unloaded for verification purposes and for the issuance of a Catch Validation Certificate, whenever appropriate. The general format of the Transshipment Certificate is shown in Annex 5;

15. The box, "**Transshipment authorization within a port area,**" shall be filled out by the competent authority responsible for the control of the transshipment port of the country where the transshipment takes place. A copy of the Transshipment Certificate evidencing the act of transshipment at port shall be submitted to the BFAR Regional Office where the fish is to be finally unloaded for the verification and subsequent issuance of a Catch Validation Certificate, if appropriate. If the transshipment was conducted at port in PNG, a copy of the original Fish Origin Declaration Form issued by the competent authority shall be submitted;
16. The box, "**Name and Address of the Exporter,**" shall be accomplished by the Exporter, who may be a cannery, a processor or the fishing company if it directly exports its catch to a member country of the EU;
17. The box, "**Flag State Authority Validation,**" shall be accomplished and signed by the authorized signatories of the BFAR Central Office or BFAR Regional Office only after they are satisfied with the information in the catch certificate and have no grounds to doubt its exhaustiveness and accuracy and the compliance with applicable management and conservation measures.
18. The exporter shall provide the transport detail in Section 10 of the regular catch certificate, which must be summarized in the document "Transport Details" and forms part of the RCC.
19. The exporter shall prepare and fill out such number of the transport details and the validating authority shall validate such number of RCCs as maybe necessary to correspond to the number of consignments being shipped out which have been derived from the verified weight of the landed fish catch.
20. Sections 11 to 12 of the RCC shall be left blank as these Sections pertain to the Importer and Customs Authority of the importing member country of the European Union.

Section 12. The Consignment Catch Certificate. The Consignment CC is the regular catch certificate issued after processing. It shall be accomplished by the fishing company and shall contain the same information as those contained in the Mother CC except for the document number, final product description and code and actual weight of the consignment. The Cannery Code and Cannery Sequence Number shall be added to the document number of the Mother CC to generate the Consignment CC's document number.

For instance, using the previous example of the Mother CC of Frabelle Corporation the code of the cannery which processed the catch and the cannery sequence code shall be added to Mother CC's document number, which is **608-**

BFAR12-FFC-2011-0001. Thus, the final document number appearing on the Consignment CC will be **608-BFAR12-FFC-2011-0001-GTC-0001**. The final product code and description shall also be supplied; for example, for canned skipjack, the description of the product shall be *canned tuna* and the product code shall be *1604.14*. The codes for all registered canneries are listed in Annex 4.

The weight of the consignment shall be provided by the cannery or processing plant to the fishing company for the box "Estimated live weight". In support thereto, the cannery or processor shall submit a letter informing BFAR of the weight of the consignment. The total weight of the consignment weight indicated in the various Consignment CCs must not exceed the verified weight landed indicated in the Mother CC. Sections 6 and 7 shall be left blank in the Consignment CC even if transshipment is declared in the Mother CC.

Section 13. The Catch Validation Certificate (CVC). The Catch Validation Certificate is a document issued by BFAR certifying the species and volume of fish landed by a fishing vessel in a particular fish port in the Philippines. Since most catches are unloaded by carrier vessels that consolidate catch from one or more catcher vessels, the CVC shall also indicate the species and volume of fish per catcher vessel. For this purpose, the carrier vessel must provide a Transshipment Certificate. The species and weight indicated in the CVC shall be the basis of the weight that will be indicated under the box "Verified weight landed (kg) where appropriate". Annex 6 contains the amended format of the CVC.

Section 14. Procedures in Securing the RCC.

1. The fishing company shall properly accomplish the RCC in triplicate, in accordance with the aforementioned instructions and shall submit these to BFAR together with the documentary requirements stated in Sections 9 and 10.
2. The BFAR shall evaluate and verify the documents and the information contained therein and if satisfied of the completeness, truthfulness and correctness of the data and the RCC's exhaustiveness and accuracy, as well as compliance with applicable management and conservation measures, the authorized signatory shall accomplish, sign, and affix the official dry and wet seal in Section 9 of the RCC. Otherwise, the RCC shall not be validated and the same together with the documentary requirements shall be returned to the fishing company, which shall be informed of the lacking requirement/s or reason for the rejection.
3. Two (2) sets of the validated RCC shall be released to the fishing company within three (3) working days from the date of application. One (1) set shall be retained by BFAR for record purposes.
4. The fishing company shall furnish the cannery or processor that purchased the catch with one (1) set of the validated RCC and retain the other set for record purposes.

5. Should the cannery or processor export the catch without processing, it shall use the validated RCC to accompany the consignment. Should processing be undertaken by the cannery or processor, the latter shall advise the fishing company to request the issuance of a Consignment CC by BFAR. The cannery or processor shall provide the fishing company the final product description, actual weight of the consignment and the corresponding product code.
6. The fishing company shall accomplish and sign in triplicate the Consignment CC, which shall contain the information from the Mother CC and the information provided by the cannery or processor in Step 5. It shall submit the same to BFAR for validation. No documentary requirements shall be attached to Consignment CCs except the letter from the cannery or processor informing BFAR of the consignment weight of the product. BFAR shall then release the same following Steps 2 and 3.
7. The fishing company shall furnish the cannery or processor with one (1) copy of validated Consignment CC for the latter's use for its exports to EU and shall retain the other copy for its own records.

CHAPTER III
The Processing Statement
(Annex IV of the IUUF Regulation)

Section 15. Scope. The Processing Statement shall be issued by DA-BFAR only for fish or fishery products caught by foreign flagged fishing vessels in high seas or waters of other countries, which are unloaded and processed in the Philippines. Consignments from raw materials caught by Philippine-flagged fishing vessels, whether caught in domestic waters, high seas or waters of other countries do not require Processing Statements.

Section 16. Verification of Overseas/Foreign Catch Certificates. No Processing Statement shall be issued by BFAR without presentation by the importer of the original copy of the overseas/foreign Catch Certificate. The concerned BFAR Office shall also cross-check the authenticity of the signatures therein with the specimen signatures of the signatory of the issuing country.

Section 17. Verification of Weights. BFAR shall scrutinize the weights in the Processing Statement. It shall ensure that quantities processed (6th column) match with the quantities obtained after processing (7th column) by monitoring the production yield. For this purpose, the cannery/processor shall submit a production/processing report. Should there be any inconsistencies, BFAR shall conduct an inspection of the cannery/processing facility. It shall further ensure that overseas/foreign Catch Certificates are not used more than they should be by checking that the weights in the Processing Statement do not exceed the "Estimated Live Weight" in the overseas/foreign Catch Certificate.

Section 18. Instructions in Accomplishing the Processing Statement.

1. The “**Catch Certificate Number**” refers to the Catch Certificate Number of the foreign Catch Certificate;
2. The “**Vessel name(s) and flag(s)**” refers to the name of the foreign flagged fishing vessel and its flag as borne by the foreign Catch Certificate;
3. The “**Validation date(s)**” is the date/s when the foreign Catch Certificate was validated;
4. The “**Catch description**” is a description of the form of the imported raw materials whether the same is in frozen, fresh/chilled or pre-processed;
5. The “**Total landed weight (kg)**” is the total weight of catches landed by the foreign fishing vessel in the Philippines, which shall also be reflected in the Catch Validation Certificate to be filled out by authorized BFAR representative during the unloading of catch;
6. The “**Catch processed (kg)**” is the processed weight which forms part of the total landed weight; and,
7. The “**Processed fishery product (kg)**” is the gross weight of the products obtained after processing, for example weight of the canned tuna.

CHAPTER IV The Simplified Catch Certificate (SCC)

Section 19. Scope. This Chapter applies to catches obtained by fishing vessels:

1. with an overall length of less than 12 meters without towed gear;
2. with an overall length of less than 8 meters with towed gear;
3. without superstructure; or,
4. less than 20 Gross Tons.

Section 20. The SCC. The SCC is the catch certificate for catches of fishing vessels stated in Section 19, which shall be accomplished by the Processor/Exporter or its authorized representative. It shall be submitted to BFAR for validation within one (1) week from unloading of the fish catch at the fish port, together with the required documents listed in Section 21. It shall follow the format prescribed in Annex 2.

Section 21. Requirements for SCC Validation. The following are the requirements for the validation of SCC:

1. Any of the following documents:
 - a. Original copy of Auxiliary Invoice issued by the Local Government Unit (LGU) where the catch was obtained;
 - b. Certificate of Domestic Movement issued by BFAR Regional Office concerned; or,

- c. Official receipt issued by the supplier whose specimen signature had been previously submitted by the exporter to and validated by BFAR.
2. Copy of the municipal registration papers and/or fishing license or CFVGL;
3. Duly accomplished BFAR-prescribed fish catch report using the prescribed forms in Annex 7 hereof.

Section 22. Instructions in Accomplishing the SCC.

1. The box "**Validation Authority**" is used to identify the authority which validates the SCC. This is reserved for this purpose and must be filled out only by BFAR;
2. The **document number** shall include:
 - a. the ISO code for the Flag State, which is 608 in the case of the Philippines;
 - b. Identifying code for the competent authority, for instance BFAR + Regional Office number;
 - c. Exporter code;
 - d. Year of validation; and,
 - e. Number in continuous series.

For example, the document number of the SCC filed by Jam Seafoods, Inc. with exporter code JSI, at the BFAR Central Office and validated by the latter shall be 608-BFARCO-JSI-2011-0001, and succeeding SCCs shall be 608-BFARCO-JSI-2011-0002 and so forth. Annex 4 contains the exporters' codes;

3. The box "**Description of Product**" shall indicate the product form, such as *frozen fish, fresh/chilled tuna loins, fresh/chilled whole tuna, frozen octopus*, among others;
4. The **species name** shall refer both to the common or English name and scientific name of the species while the product code is the commodity's six-digit tariff code under the Harmonised System, which is made available online by the EC through the website <http://mkaccdb.eu.int>. For instance, for fresh/chilled yellowfin tuna loins, the scientific name shall be *Thunnus albacares* and the product code shall be 0304.19.
5. The box, "**Verified weight landed (kg)**" shall state the actual total weight of the consignment to be exported. This box must at all times be filled out during validation, which shall be carried immediately prior to shipment or in the airport by authorized BFAR signatories.
6. The box, "**References of applicable conservation and management measures,**" refers to the conservation and management measures for the species for which the SCC is being validated, which may either be measures

adopted by the flag State or by an RFMO to which the flag State is a party, or both. A brief description of the measure/s should be given such as subject to fishing license, quota, or restricted fishing gear. References need to be cited, for instance, for catches of skipjack, yellowfin or bigeye, the term *WCPFC* and *FAO 226* shall be stated, while *RA 8550* shall be stated for catches of octopus. This box shall be filled out by the operator.

7. The box, **“List of vessels who have provided catches and the quantities by each vessel (name, registration number, etc. annexed),”** shall be filled out by the exporter. The required information on the fishing vessel used in catching the fish or species to be exported, such as vessel name, registration number, and the quantity of the product (gross weight in kilograms) supplied by each fishing vessel shall be indicated in this box and if necessary, a separate sheet may be used, which shall be attached as an annex to the SCC.
8. The box, **“Name, address, tel. and fax of Exporter,”** shall be filled out, signed and sealed or stamped by the exporter. The date shall correspond to the date when the SCC was accomplished and signed by the exporter, which date should always either precede or coincide with the date of validation;
9. The box, **“Flag State Authority Validation”** shall be filled out, signed and sealed by the authorized signatories of the BFAR Central Office or BFAR Regional Office only after they are satisfied with the information provided in the SCC and have no grounds to doubt its exhaustiveness and accuracy and the compliance with applicable management and conservation measures;
10. The box, **“Transport Details,”** shall be filled out by the exporter; and,
11. Sections 7 and 8 shall be left blank since these sections shall be filled out only by the importer and the competent authority of the EU member country.

Section 23. Procedures in Accomplishing the SCC.

1. The exporter shall accomplish, sign and affix the seal or stamp on the SCC with all the necessary information in accordance with the instructions stated in the preceding Section. S/he shall submit to BFAR two (2) sets of the SCC and the documentary requirements enumerated in Section 21. For fresh/chilled tuna loins, the SCC shall be submitted to the designated BFAR signatories stationed at the international airports for validation, immediately prior to shipment when the information on the verified weight landed is already available.
2. The BFAR shall evaluate and verify the documents and the information contained therein and if satisfied on the completeness, truthfulness and correctness of the data, and the SCC's exhaustiveness and accuracy, as well as compliance with applicable management and conservation measures, the authorized signatory shall accomplish, sign, and apply the dry seal/stamp in order to validate the SCC. Otherwise, the SCC shall not be validated and the same together with the documentary requirements shall be returned to the

fishing company, which shall be informed of the lacking requirement/s or reason for the rejection.

3. BFAR shall release one (1) set of the validated SCC to the exporter and retain (1) set for record purposes.
4. The exporter shall use the original copy of the validated SCC and transport details, to accompany the consignment, and convey the same to the consignee or importer. Only the original copy of the validated SCC shall be given; the documentary requirements shall be kept by the exporter.

CHAPTER V

Record Keeping, Monitoring and Payment of Fees

Section 24. Record-keeping by fishing companies, processors and exporters.

Fishing companies, canneries, processors and exporters shall keep a record of all Catch Certificates issued to them by BFAR, together with all the documentary requirements in a folder and a separate electronic list of Catch Certificates in order to keep track of the number of catch certificates issued and make these records readily available to BFAR upon request.

Section 25. Record-keeping by BFAR. The BFAR Central Office and concerned BFAR Regional Offices shall maintain an updated record of the Catch Certificates issued by their respective offices, both in electronic form and otherwise, in order to keep track of the number of Catch Certificates issued and for monitoring purposes, and make these records readily available to EU upon request.

Section 26. Submission of monthly reports and maintenance of Central Database. The concerned BFAR regional offices shall submit a monthly report on the implementation of the Catch Certification Scheme including submission of the list of Catch Certificates they have issued per month as well as the overseas Catch Certificate requests and problems encountered to the Fisheries Regulatory and Quarantine Division (FRQD) of the BFAR Central Office. The FRQD shall maintain a national or central database of all the catch certificates issued by BFAR.

Section 27. Preservation of Original CCs. The originals of the catch certificates must be retained and preserved for a minimum period of three (3) years by BFAR as the validation authority, which period coincides with the period in which the Community preserves its own copies of the same.

Section 28. Monitoring. For purposes of ensuring the effective implementation of the IUU Regulation, BFAR shall conduct random and unannounced inspection, monitoring or evaluation of the fishing company, cannery or processing plant. Funds for these activities shall be made available upon approval of the project proposal.

Section 29. Fees. A fee of fifty pesos (P50.00) shall be paid to BFAR by the applicant to defray administrative cost for the issuance of RCC, SCC, and Processing Statement.

CHAPTER VI
Settlement of Issues

Section 30. Settlement of Issues. Queries and requests for clarifications or confirmation and other issues raised by any of the EU-Member Countries in relation to a Catch Certificate validated by BFAR shall be sent to the BFAR Signatory who validated the same, copy furnished the BFAR FRQD and the Office of the BFAR Director. The queries and request for clarification or confirmation must be written in paper bearing the official letter head and logo of the competent authority of the importing EU-member country, and maybe conveyed electronically to expedite resolution and to prevent a long detention period of the consignment.

Section 31. Official Reply. The BFAR Signatory who validated the CC shall address the query or request for clarification or confirmation or any issues raised, in consultation with the fishing company, cannery, processor or exporter concerned and the reply shall be sent to the requesting party, copy furnished the BFAR FRQD and the Office of the BFAR Director.

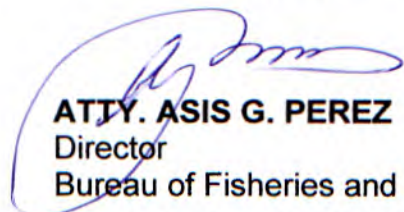
CHAPTER VII
Annexes

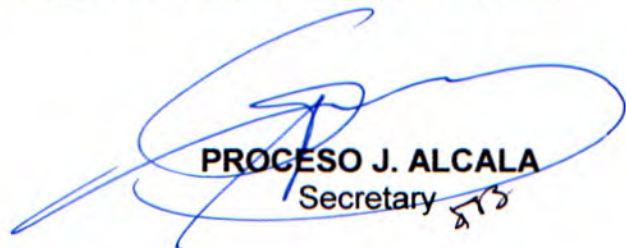
1. General Format of Regular Catch Certificate
2. General Format of Simplified Catch Certificate
3. Process Flow for the issuance of Regular and Simplified Catch Certificate
4. List of Codes of Commercial Fishing Companies, Canneries and/or Processors.
5. General Format of Transshipment Certificate.
6. Amended Format of the Catch Validation Certificate.
7. BFAR-Prescribed Formats of Fish Catch Reports and Logsheet
8. List of Fishery Products Excluded from Catch Certification

Section 32. Effectivity. This Order shall take effect fifteen (15) days after its publication in the Official Gazette or in a newspaper of general circulation and upon registration with the National Administrative Register.

Issued this 9th day of January 2012 2011 at Quezon City, Philippines.

Recommending approval:


ATTY. ASIS G. PEREZ
Director
Bureau of Fisheries and Aquatic Resources


PROCESO J. ALCALA
Secretary


SALVADOR S. SALACUP
Asst. Secretary of Agriculture

DEPARTMENT OF AGRICULTURE
In replying pls cite this code :
For Signature: S-12-11-0151
Received : 12/12/2011 02:37 PM

Published: January 12, 2012
The Philippine Star

14 January 17, 2012
UP Law Center - ONAR

ANNEX 1

EUROPEAN COMMUNITY CATCH CERTIFICATE

Document number				Validating Authority			
1. Name			Address			Tel. No.	
						Fax No.	
2. Fishing Vessel Name		Flag – Homeport and Registration Number		Call Sign		IMO/Lloyd's no. (if issued)	
Fishing License No. – Valid to		Inmarsat No. Fax No., Tel. No., E-mail address (if issued)					
3. Description of Product		Type of processing authorized on board:		4. References of applicable conservation and management measures			
Species	Product Code	Catch area(s) and dates	Estimated live weight (kg)	Estimated weight to be landed (kg)	Verified weight landed (kg) where appropriate		
5. Name of master of fishing vessel – Signature – Seal:							
6. Declaration of Transhipment at Sea (Name of master of fishing vessel)			Signature and date		Transhipment Date/Area/Position		Estimated weight (kg)
Master of Receiving Vessel		Signature	Vessel Name		Call sign	IMO/Lloyd's number (if issued)	
7. Transhipment authorization within a port area							
Name	Authority	Signature	Address	Tel.	Port of Landing	Date of Landing	Seal (stamp)

8. Name and address of Exporter		Signature	Date	Seal (Stamp)	
9. Flag State Authority Validation:					
Name/Title		Signature	Date	Seal (stamp)	
10 Transport details : (see Appendix I)					
11. Importer Declaration					
Name and address of Importer		Signature	Date	Seal	Product CN Code
Document under Article 14(1), (2) of Regulation (EC) No.../2008		References			
12. Import control – Authority		Place	Importation authorized (*)	Importation suspended (*)	Verification requested – date
Customs Declaration (if issued)	Number		Date	Place	

**Appendix I
Transport Details**

1. Country of exportation	2. Exporter signature			
Vessel name and flag Flight number/airway bill number Truck nationality and registration number Railway bill number Other transport document	Container number(s)	Name	Address	Signature

ANNEX IV

Statement under Article 14(2) of Council Regulation (EC) NO. 1005/2008 of 29 September 2008 establishing a Community system to prevent, deter and eliminate illegal unreported and unregulated fishing

I confirm that the processed fishery products..(*product description and Combined Nomenclature code*) have been obtained from catches imported under the following catch certificate(s):

Catch Certificate Number	Vessel Name(s) and Flag(s)	Validation Date(s)	Catch Description	Total landed weight (kg)	Catch Processed (kg)	Processed Fishery Product (kg)

Name and address of the processing plant:

Name and address of the exporter (if different from the processing plant):

Approval number of the processing plant:

Health Certificate number and date:

Responsible Person of the processing plant:	Signature:	Date:	Place:

Endorsement by the competent authority:

Official:	Signature and Seal:	Date:	Place:

ANNEX 2

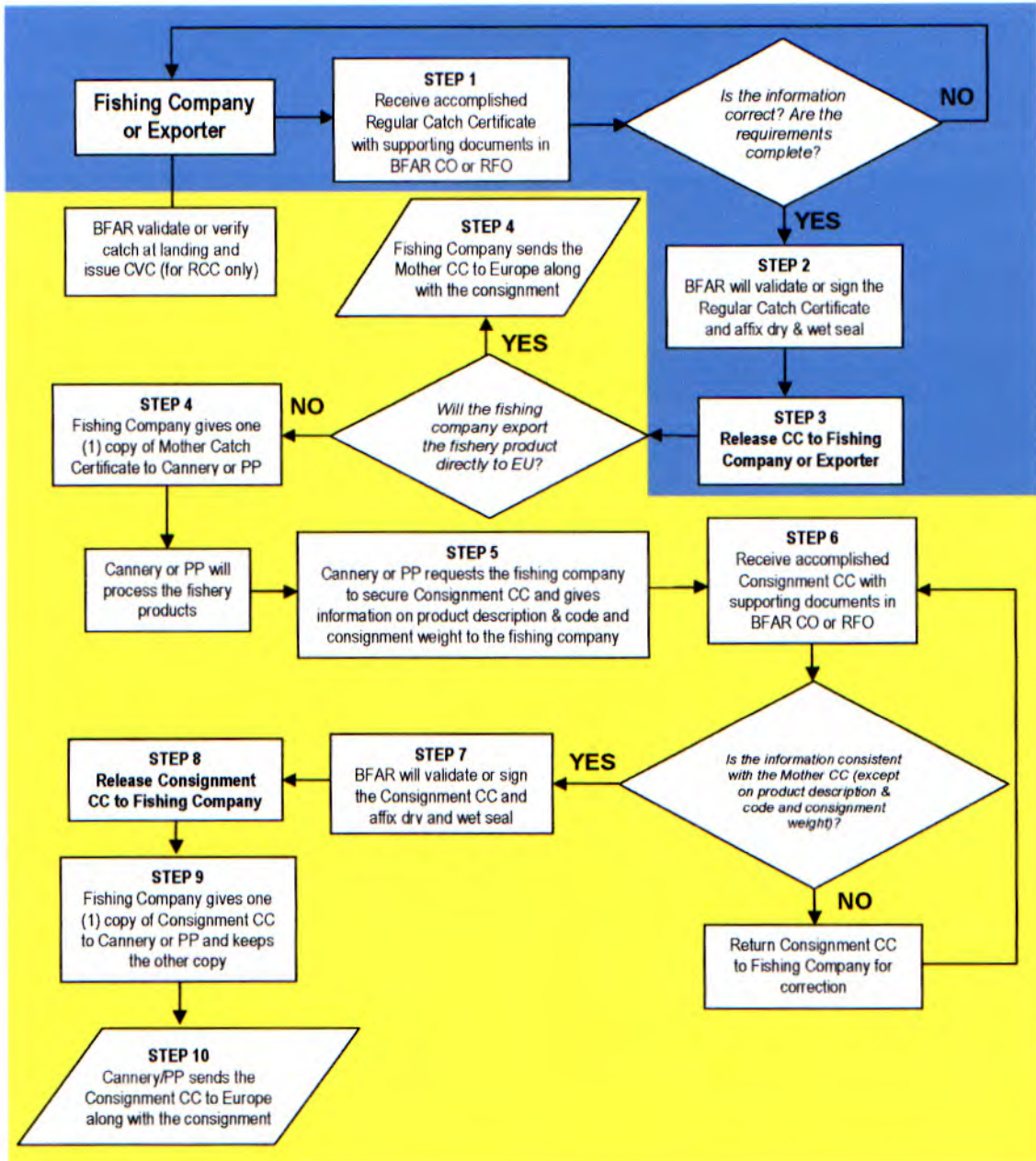
EUROPEAN COMMUNITY CATCH CERTIFICATE					
Simplified Form for fishery products fulfilling the requirements in Article 6 of this Regulation					
Document number		Validating Authority (Name, address, telephone, fax)			
1. Description of Product		2. References of applicable conservation and management measures			
Species	Product code	Verified Weight Landed (kg)			
3. List of vessels who have provided catches and the quantities by each vessel (name, registration number, etc. annexed):[in case the space is not adequate, please use attached annex]					
4. Name, address, tel. and fax of Exporter		Signature	Date	Seal (stamp)	
5. Flag State Authority Validation:					
Name/Title		Signature	Date	Seal (Stamp)	
6. Transport details : (see Appendix or attached documents, if any)					
7. Importer Declaration:					
Name and address of Importer		Signature	Date	Seal (stamp)	Product CN code
8. Import control: Authority		Place	Importation authorised*	Importation suspended*	Verification requested - date
Customs declaration (if issued)		Number	Date	Place	

**Appendix I
Transport Details**

1. Country of exportation	2. Exporter signature			
Vessel name and flag Flight number/airway bill number Truck nationality and registration number Railway bill number Other transport document	Container number(s)	Name	Address	Signature

ANNEX 3

Process Flow for the Issuance of Regular and Simplified Catch Certificate



Legend:

- Simplified Catch Certificate
- Regular Catch Certificate

ANNEX 4

List of Codes of Commercial Fishing Companies, Canneries and/or Processors

Fishing Companies

	Code	Name of Fishing Company	Address
1	ADSFC	Adomar Deep Sea Fishing Corp.	Navotas, Metro Manila
2.	AFC	Amadeo Fishing Corporation	Amadeo Compound, Marang St. General Santos City
3	APA	Asia Pacific Allied Fishing Corp.	Calumpang, General Santos City
4	AFI	Atlantis Fishing Industry	Banisil, Tambler, General Santos City
5	BPS	Bismarck Pacific Sunrise Fishing Corp.	Calumpang, General Santos City
6	BSJ	BSJ Fishing & Trading Corp.	Tambler, General Santos City
7	CLG	Carmen	Bula, General Santos City
8	CHL	CHL Fishing Industry, Inc.	Polomolok, South Cotabato
9	DFC	Damalereo Fishing Corporation	Tambler, General Santos City
10	DTF	Divine Trinity Fishing Industry	Calumpang, General Santos City
11	FFC	Frabelle Fishing Corporation	1051 North Boulevard, Navotas, Metro Manila
12	GRI	Gladery Fishing, Incorporated	General Santos City
13	JFC	Jolly Rob Fishing	059, Adam St., Paradise Subd. City Heights, General Santos City
14	LPS	LPS Fishing	Calumpang, General Santos City
15	MSV	Macalipay Fishing	Kiamba, Sarangani Province
16	MRS	Marchael Sea Venture	Lagao, General Santos City
17	MHSC	Marian Hills Simala Corporation	Bula, General Santos City
18	MFC	Mega Fishing Corporation	Zamboanga City
19	NFC	Nancy Fishing Corporation	Zamboanga City
20	NHAI	NH Agro Industrial, Inc.	P. Acharon Boulevard, General Santos City
21	RFC	Ramona Fishing	Tambler, General Santos City
22	RAV	RAV Fishing Corporation	Navotas, Metro Manila
23	RBL	RBL Fishing Corporation	925 M. Naval Street, Navotas, Metro Manila
24	RDF	RD Fishing Industry, Inc.	Calumpang, General Santos City
25	RDV	RD Fishing Ventures, Inc.	Calumpang, General Santos City
26	RRF	Rell & Renn Fishing Corporation	Tambler, General Santos City
27	RLGFI	RLGFI Corporation	Banisil, Tambler, General Santos City
28	RFI	Roel Fishing Industry	Bula, General Santos City
29	RPR	Royal Pacific Rim Fishing Corporation	Navotas, Metro Manila
30	RRFI	Rugela Fishing Industries Inc.	Calumpang, General Santos City
31	SAF	SAFII Fishing	Tambler, General Santos City
32	TVC	SAL Fishing	Labangal, General Santos City
33	SLR	San Lorenzo Ruiz Fishing Ind.	Calumpang, General Santos City
34	SPAMPI	South Phil. Agro Marine Product Incorporated	Zamboanga City
35	SSF	South Sea Fishing Ventures Phils, Inc.	Calumpang, General Santos City
36	TMC	Tenpoint Fishing	General Santos City
37	THC	Thidcor Fishing Corporation	Tambler, General Santos City
38	TPJ	Trans Pacific Journey Fishing Corp.	Navotas City
39	TSP	TSP Marine Industries	Cabu, Bawing, General Santos City
40	WPF	Western Philippine Sea Fishing Corp.	Navotas, Metro Manila
41	ZUFC	Zamboanga Universal Fishing Corp.	Zamboanga City
42	RVD	R.V. Deep Sea Fishing, Inc.	Brgy. Lipay, Sta. Cruz, Zambales

Canneries

	Code	Name of Cannery	Address
1	ASF	Alliance Select Foods	Tambler, General Santos City
2	ASC	Ayala Seafoods Corporation	Zamboanga City
3	CCC	Celebes Canning Corporation	Cabu, Tambler, General Santos City
4	GTC	General Tuna Corporation	Tambler, General Santos City
5	OCC	Ocean Canning Corporation	Tambler, General Santos City
6	PPE	Permex Producers and Exporters Corp.	Zamboanga City
7	PCC	Philbest Canning Corporation	Tambler, General Santos City
8	SCC	SeaTrade Canning Corporation	Tambler, General Santos City
9	SCI	Santa Cruz Seafoods, Inc.	Tambler, General Santos City
10	UCI	Universal Canning, Inc.	Zamboanga City

Processors

	Code	Name of Processors	Address
1	ANJ	Anjo Farms, Inc.	San Fabian, Pangasinan
2	WDN	Well Delight Networking Corporation	Tambler, General Santos City
3	BSE	Bluefin Seafood Export, Inc.	Zamboanga City
4	CTC	Crustacean Trading Corporation	Zamboanga City
5	DNL	D & L Seafood	106 Merriment St., Annex 16-18, BLS, Don Bosco, 1700, Parañaque City
6	FTR	Fitrite, Incorporated	105 General Luis St., Novaliches, Quezon City
7	FRI	FRI Seafoods (formerly JBI Foodstuff Supplier)	Blk. 42 Lot 1, Phase 2, Pinagsama Village, Taguig City
8	GFS	Gem Foods International, Inc.	Unit 26 Westgate Offices, Quezon St., Corner Sampson Road CBD Area, Subic Bay Freeport Phil.
9	JSI	Jam Seafoods, Inc.	9794 Santan Street, Vitalez Compound, Baltan Road, Parañaque City
10	JAR	Jarla Trading	20 Gold Street, R. Medina Subdivision, Sucat, Parañaque City
11	JNM	JN Mercado Seafood Supply	22 Panama Street, Better Living Subdivision, Parañaque City
12	MFI	Mofels Food International Corporation	2020 Arpilled St., Brgy. Carmona, Makati City
13	MSS	MS Seafood Supplier	116 Don Antonio Street, Caloocan City
14	NFMTc	Nuevo Fresco Marine Trading Corporation	104 San Miguel Street, San Antonio Valley 2, Sucat Parañaque City
15	SCI	Seachamp International Export Corp.	Bldg., 11 Skydragon Compound, Domestic Terminal Road, Pasay City
16	FAB	F.A.B. Sea Resources Corporation	20 Russel Avenue, House #7 Pasay City
17	RDEX	RDEX Food International	Putting Bato, Calumpang, General Santos City

Annex 4
**Additional List of Codes of Commercial Fishing Companies,
 Canneries and/or Processors**

Fishing Companies

1	AMR	AMR Fishing Corporation	Cawit, Zamboanga City
2	CFC	Century Fishing Corporation	Morning Breeze, Tugbungan, Zamboanga City
3	ENL	E&L Fishing Enterprise	Morning Breeze, Tugbungan, Zamboanga City
4	GST	GST Fishing Corporation	Talon Talon, Zamboanga City
5	GMA	GMA Fishing Corporation	Morning Breeze, Tugbungan, Zamboanga City
6	JOR	Jordan Fishing Corporation	Panama Drive, Mampang, Zamboanga City
7	OFV	Oceanic Fishing Venture	Unico Kasanyangan, Sta. Catalina, Zamboanga City
8	OLC	Our Lady of Carmel Fishing Venture	Morning Breeze, Tugbunga, Zamboanga City
9	SSC	Stanley Susobrado Chiong	Saavedra St., Sta. Maria, Zamboanga City
10	YLF	YL Fishing Corporation	Zone 1, Dumagsa Road, Talisayan, Zamboanga City
11	VFC	Vurgo Fishing Corporation	Talon Talon, Zamboanga City

Canneries

1	CSC	Columbus Seafood Corporation	Brgy. Talisayan, Zamboanga City
---	-----	------------------------------	---------------------------------

Processors

1	AAC	Agri-Aquatic Care Enterprise, Inc.	Don Anselmo Bernard Ave., Manabay, Ozamis City, Misamis Occidental
---	-----	------------------------------------	--

ANNEX 5

TRANSSHIPMENT CERTIFICATE
(V 11.01.2011)

TC No. _____

TRANSFERRED FROM: <i>(Vessel Name)</i>		TRANSFERRED TO: <i>(Vessel Name)</i>	
Vessel Type:		Vessel Type:	
Owner:		Owner:	
Call Sign:		Call Sign:	
Fishing Period/Catch Dates: <i>(As appears in the vessel logsheet)</i>		Fishing Ground	
TRANSSHIPMENT DETAILS			
Location of Transshipment:		Date(s) of Transshipment:	
Latitude:			
Longitude			
SPECIES TRANSSHIPPED	STATE OF FISH (fresh/chilled/frozen)	ESTIMATED WEIGHT (in kilograms)	

We certify that the information supplied herein is true and correct:

Signature over printed name of
Captain of TRANSFERRING Vessel

Signature over printed name of
Captain of RECEIVING Vessel

Captain's Seal/Stamp

Captain's Seal/Stamp

NOTE: **Attach Stowage Plan signed by the Captain/Chief Mate in this Transshipment Certificate.**



Republic of the Philippines
Department of Agriculture
BUREAU OF FISHERIES AND AQUATIC RESOURCES

ANNEX 6
CATCH VALIDATION CERTIFICATE
(Pursuant to Sec. 13 of FAO 238, s. 2012)

CVC No. _____

Name of Unloading Vessel:		Date/s of Unloading:											
Owner:	Port/Place of Unloading:												
Vessel Type:													
If unloading vessel is carrier, indicate name of catcher vessel/s:													
Source of Catch (Name of Catcher Vessel)	Species (use species codes below)	Catch Description (frozen or fresh/chilled)	Verified Weight Landed (in metric tons)	Buyer/Destination (indicate name of cannery)									
<p>Species Codes:</p> <table border="0"> <tr> <td>SKJ – Skipjack tuna</td> <td>YFT – Yellowfin tuna</td> <td>FSS – Fringsescale sardinella</td> </tr> <tr> <td>BET – Bigeye tuna</td> <td>MSD – Mackerel Scad</td> <td>BLS – Ball sardinella</td> </tr> <tr> <td>FRZ – Bullet/Frigate tuna</td> <td>AGS – Spotted sardinella</td> <td>GSS – Goldstripe sardinella</td> </tr> </table>					SKJ – Skipjack tuna	YFT – Yellowfin tuna	FSS – Fringsescale sardinella	BET – Bigeye tuna	MSD – Mackerel Scad	BLS – Ball sardinella	FRZ – Bullet/Frigate tuna	AGS – Spotted sardinella	GSS – Goldstripe sardinella
SKJ – Skipjack tuna	YFT – Yellowfin tuna	FSS – Fringsescale sardinella											
BET – Bigeye tuna	MSD – Mackerel Scad	BLS – Ball sardinella											
FRZ – Bullet/Frigate tuna	AGS – Spotted sardinella	GSS – Goldstripe sardinella											
<p>Conforme:</p> <p>_____ Fishing Company Representative</p>			<p>Validated/Verified by:</p> <p>_____ BFAR Fisheries Officer Name and Signature</p>										

ANNEX 7
BFAR-Prescribed Fish Catch Report and Logsheets

PRESCRIBED FISH CATCH REPORT
(for EU Simplified Catch Certificate)

Vessel Name	Homeport
Registration Number	Fishing License Number

Fishing Details

Fishing Ground:	Date of Departure:
Fishing Gear	Date of Return:
Place of Departure	No. of FADs used
Landing Area	Fish Catch Landing No.
<i>Casa/Konsignasyon</i>	

Landed Target Species (Use Codes)	Weight (kgs./pc.)	Grade (A,B,C,D)	TAG		Retained By-Catch Species (Use Codes)	No. of Pieces	Total Weight (kgs.)
1					1		
2					2		
3					3		
4					4		
5					5		
6					6		
7					7		
8					8		
9					9		
10					10		
11					11		
12					12		
13					13		
14					14		
15					15		

Target Species Code:
YFT = Yellowfin tuna SWO = Swordfish
BET = Bigeye tuna SFA = Sailfish
BUM = Blue marlin

Retained By-Catch Species Code:
SKJ = Skipjack COR = *Mahi-mahi*
WAH = Wahoo SCOM =
Mackerels
RRU = Rainbow Runner ALB = Albacore
FRI = Frigate tuna SHA = Sharks

I certify that the above information are true and correct to the best of my knowledge and abilities.

Certified correct:

Signature Over Printed Name
of the Boat Captain/Owner

Signature Over Printed Name
of the Casa Owner

**FISH CATCH REPORT
(for EU SIMPLIFIED CATCH CERTIFICATE)**

Fishing Boat Name:	Boat Type:	Gross tonnage
Owner:	Registration number:	
Homeport:	Fishing License Expiry Date:	

Month	Day	Latitude (dd-mm-ss)	Longitude (dd-mm-ss)	No. of Drags	Time Started	Time Ended	Total weight caught (in kilos)				Place Landed (Landing area)	
							Acetes spp. (Alamang)	Spratelloides gracilis (Dilis)	Siganus spp. (Padas)	Decapterus macrosoma (Galunggong)		Others, specify
TOTAL												

I certify that the above information are true and correct to the best of my knowledge and abilities.

Signature over printed name of Boat Captain/Master

PHILIPPINES -- PURSE-SEINE AND RINGNET LOGSHEET

NAME OF VESSEL		FISHING PERMIT OR LICENCE NUMBER(S)	YEAR	TRIP NUMBER THIS YEAR
NAME OF FISHING COMPANY		NAME OF AGENT IN PORT OF UNLOADING	PORT OF UNLOADING	
COUNTRY OF REGISTRATION		NUMBER OF FADS USED	TENDER VESSELS USED?(Y/N)	DATE AND TIME OF ARRIVAL IN PORT
REGISTRATION NUMBER IN COUNTRY OF REGISTRATION		INTERNATIONAL RADIO CALL SIGN	DATE AND TIME OF DEPARTURE	
• ALL WEIGHTS MUST BE METRIC TONNES				

				RETAINED CATCH																	
MONTH	DAY	MIDDAY OR SET POSITION		SCHOOL		START		END		SKIPJACK TUNA (guliyasan) WEIGHT	YELLOWFIN TUNA (tambakol/barifles) WEIGHT	BIGEYE TUNA (tambakol/barifles) WEIGHT	BULLET TUNA (tulingan) WEIGHT	FRIGATE TUNA (tulingan) WEIGHT	MACKEREL (elumahan / hasa-hasa) WEIGHT	SCAD (galinggong) WEIGHT	KAWAKAWA (katchorta) WEIGHT	OTHER SPECIES			
		LATITUDE	LONGITUDE	E	W	ASSOC	CODE	OF SET	TIME									OF SET	TIME	NAME	WEIGHT
PAGE TOTAL																					
TRIP TOTAL																					

ACTIVITY CODES

- RECORD ALL SETS
- IF NO FISHING SET MADE IN A DAY, RECORD THE MAIN ACTIVITY FOR THAT DAY
- 1 FISHING SET
- 2 SEARCHING
- 3 TRANSIT
- 4 NO FISHING - BREAKDOWN
- 5 NO FISHING - BAD WEATHER
- 6 IN PORT - PLEASE SPECIFY
- 7 NET CLEANING SET
- 10 DEPLOYING OR RETREIVING RAFTS, FADS OR PAYAOs

SCHOOL ASSOCIATION CODES

- 1 UNASSOCIATED
- 2 FEEDING ON BAIT/FISH
- 3 DRIFTING LOG, DEBRIS OR DEAD ANIMAL
- 4 DRIFTING RAFT, FAD OR PAYAO
- 5 ANCHORED RAFT, FAD OR PAYAO
- 6 LIVE WHALE
- 7 LIVE WHALE SHARK
- 8 OTHER

TUWA DISCARD CODES

- 1 FISH TOO SMALL
- 2 FISH DAMAGED
- 3 VESSEL FULLY LOADED
- 4 OTHER REASON

UNLOADINGS TO CANNERY, COLD STORAGE, CARRIER OR OTHER VESSEL

START DATE	END DATE	SKJ	YFT	BET	BLT	FGT	M SD	FGT	OTH	MIX	TOTAL

NAME OF CAPTAIN	DATE
-----------------	------

ANNEX 8

List of Fishery Products Excluded from Catch Certification

Product Code	Product Description
ex Chapter 3 ex 1604 ex 1605	Aquaculture products obtained from fry or larvae
0301 10 (*)	Ornamental fish, live
ex 0301 91	Trout (<i>Salmo trutta</i> , <i>Oncorhynchus mykiss</i> , <i>Oncorhynchus clarki</i> , <i>Oncorhynchus aguabonita</i> , <i>Oncorhynchus gilae</i> , <i>Oncorhynchus apache</i> and <i>Oncorhynchus chrysogaster</i>), live, caught in freshwater
ex 0301 92 00	Eels (<i>Anguilla</i> spp.), live, caught in freshwater
0301 93 00	Carp, live
ex 0301 99 11	Pacific salmon (<i>Oncorhynchus nerka</i> , <i>Oncorhynchus gorbusha</i> , <i>Oncorhynchus keta</i> , <i>Oncorhynchus tshawytscha</i> , <i>Oncorhynchus kisutch</i> , <i>Oncorhynchus masou</i> and <i>Oncorhynchus rhodurus</i>), Atlantic salmon (<i>Salmo salar</i>) and Danube salmon (<i>Hucho hucho</i>), live, caught in freshwater
0301 99 19	Other freshwater fish, live
ex 0302 11	Trout (<i>Salmo trutta</i> , <i>Oncorhynchus mykiss</i> , <i>Oncorhynchus clarki</i> , <i>Oncorhynchus aguabonita</i> , <i>Oncorhynchus gilae</i> , <i>Oncorhynchus apache</i> and <i>Oncorhynchus chrysogaster</i>), fresh or chilled, excluding fish fillets and other fish meat of heading 0304, caught in freshwater
ex 0302 12 00	Pacific salmon (<i>Oncorhynchus nerka</i> , <i>Oncorhynchus gorbusha</i> , <i>Oncorhynchus keta</i> , <i>Oncorhynchus tshawytscha</i> , <i>Oncorhynchus kisutch</i> , <i>Oncorhynchus masou</i> and <i>Oncorhynchus rhodurus</i>), Atlantic salmon (<i>Salmo salar</i>) and Danube salmon (<i>Hucho hucho</i>), fresh or chilled, excluding fish fillets and other fish meat of heading 0304, caught in freshwater
ex 0302 19 00	Other <i>Salmonidae</i> , fresh or chilled, excluding fish fillets and other fish meat of heading 0304, caught in freshwater
ex 0302 66 00	Eels (<i>Anguilla</i> spp.), fresh or chilled, excluding fish fillets and other fish meat of heading 0304, caught in freshwater
0302 69 11	Carp, fresh or chilled, excluding fish fillets and other fish meat of heading 0304
0302 69 15	Tilapia (<i>Oreochromis</i> spp.), fresh or chilled, excluding fish fillets and other fish meat of heading 0304
0302 69 18	Other freshwater fish, fresh or chilled, excluding fish fillets and other fish meat of heading 0304
ex 0302 70 00	Livers and roes, fresh or chilled, of other freshwater fish
ex 0303 11 00	Sockeye salmon (red salmon) (<i>Oncorhynchus nerka</i>), excluding livers and roes, frozen, excluding fish fillets and other fish meat of heading 0304, caught in freshwater
ex 0303 19 00	Other Pacific salmon (<i>Oncorhynchus gorbusha</i> , <i>Oncorhynchus keta</i> , <i>Oncorhynchus tshawytscha</i> , <i>Oncorhynchus kisutch</i> , <i>Oncorhynchus masou</i> and <i>Oncorhynchus rhodurus</i>), excluding livers and roes, frozen, excluding fish fillets and other fish meat of heading 0304, caught in freshwater ex 0303 21 Trout (<i>Salmo trutta</i> , <i>Oncorhynchus mykiss</i> , <i>Oncorhynchus clarki</i> , <i>Oncorhynchus aguabonita</i> , <i>Oncorhynchus gilae</i> , <i>Oncorhynchus apache</i> and <i>Oncorhynchus chrysogaster</i>), excluding livers and roes, frozen, excluding fish fillets and other fish meat of heading 0304, caught in freshwater
ex 0303 22 00	Atlantic salmon (<i>Salmo salar</i>) and Danube salmon (<i>Hucho hucho</i>), excluding livers and roes, frozen, excluding fish fillets and other fish meat of heading 0304, caught in freshwater
ex 0303 29 00	Other salmonidae, excluding livers and roes, frozen, excluding fish fillets and other fish meat of heading 0304, caught in freshwater
ex 0303 76 00	Eels (<i>Anguilla</i> spp.), frozen, excluding fish fillets and other fish meat of heading 0304, caught in freshwater
0303 79 11	Carp, frozen, excluding fish fillets and other fish meat of heading 0304
0303 79 19	Other freshwater fish, frozen, excluding fish fillets and other fish meat of heading 0304
ex 0303 80	Livers and roes, frozen, of other freshwater fish
0304 19 01	Fish fillets, fresh or chilled, of Nile perch (<i>Lates niloticus</i>)
0304 19 03	Fish fillets, fresh or chilled, of pangasius (<i>Pangasius</i> spp.)
ex 0304 19 13	Fish fillets, fresh or chilled, of Pacific salmon (<i>Oncorhynchus nerka</i> , <i>Oncorhynchus gorbusha</i> , <i>Oncorhynchus keta</i> , <i>Oncorhynchus tshawytscha</i> , <i>Oncorhynchus kisutch</i> , <i>Oncorhynchus masou</i> and <i>Oncorhynchus rhodurus</i>), Atlantic salmon (<i>Salmo salar</i>) and Danube salmon (<i>Hucho hucho</i>), caught in freshwater

Product Code	Product Description
ex 0304 19 15	Fish fillets, fresh or chilled, of the species <i>Oncorhynchus mykiss</i> weighing more than 400 g each, caught in freshwater ex 0304 19 17 Fish fillets, fresh or chilled, of trout of the species <i>Salmo trutta</i> , <i>Oncorhynchus mykiss</i> (weighing 400 g or less), <i>Oncorhynchus clarki</i> , <i>Oncorhynchus aguabonita</i> and <i>Oncorhynchus gilae</i> , caught in freshwater
0304 19 18	Fish fillets, fresh or chilled, of other freshwater fish
0304 19 91	Other fish meat (whether or not minced), fresh or chilled, of freshwater fish
0304 29 01	Frozen fillets of Nile perch (<i>Lates niloticus</i>)
0304 29 03	Frozen fillets of pangasius (<i>Pangastus</i> spp.)
0304 29 05	Frozen fillets of Tilapia (<i>Oreochromis</i> spp.)
ex 0304 29 13	Frozen fillets of Pacific salmon (<i>Oncorhynchus nerka</i> , <i>Oncorhynchus gorbuscha</i> , <i>Oncorhynchus keta</i> , <i>Oncorhynchus tshawytscha</i> , <i>Oncorhynchus kisutch</i> , <i>Oncorhynchus masou</i> and <i>Oncorhynchus rhodurus</i>), Atlantic salmon (<i>Salmo salar</i>) and Danube salmon (<i>Hucho hucho</i>), caught in freshwater
ex 0304 29 15	Frozen fillets of <i>Oncorhynchus mykiss</i> weighing more than 400 g each, caught in freshwater
ex 0304 29 17	Frozen fillets of trout of the species <i>Salmo trutta</i> , <i>Oncorhynchus mykiss</i> (weighing 400 g or less), <i>Oncorhynchus clarki</i> , <i>Oncorhynchus aguabonita</i> and <i>Oncorhynchus gilae</i> , caught in freshwater
0304 29 18	Frozen fillets of other freshwater fish
0304 99 21	Other fish meat (whether or not minced), frozen, of freshwater fish
0305 10 00	Flours, meals and pellets of fish, fit for human consumption
ex 0305 20 00	Livers and roes of freshwater fish, dried, smoked, salted or in brine
ex 0305 30 30	Fish fillets, salted or in brine, of Pacific salmon (<i>Oncorhynchus nerka</i> , <i>Oncorhynchus gorbuscha</i> , <i>Oncorhynchus keta</i> , <i>Oncorhynchus tshawytscha</i> , <i>Oncorhynchus kisutch</i> , <i>Oncorhynchus masou</i> and <i>Oncorhynchus rhodurus</i>), Atlantic salmon (<i>Salmo salar</i>) and Danube salmon (<i>Hucho hucho</i>), caught in freshwater
ex 0305 30 90	Fish fillets, dried, salted or in brine, but not smoked, of other freshwater fish
ex 0305 41 00	Pacific salmon (<i>Oncorhynchus nerka</i> , <i>Oncorhynchus gorbuscha</i> , <i>Oncorhynchus keta</i> , <i>Oncorhynchus tshawytscha</i> , <i>Oncorhynchus kisutch</i> , <i>Oncorhynchus masou</i> and <i>Oncorhynchus rhodurus</i>), Atlantic salmon (<i>Salmo salar</i>) and Danube salmon (<i>Hucho hucho</i>), smoked, including fillets, caught in freshwater
ex 0305 49 45	Trout (<i>Salmo trutta</i> , <i>Oncorhynchus mykiss</i> , <i>Oncorhynchus clarki</i> , <i>Oncorhynchus aguabonita</i> , <i>Oncorhynchus gilae</i> , <i>Oncorhynchus apache</i> and <i>Oncorhynchus chrysogaster</i>), smoked, including fillets, caught in freshwater
ex 0305 49 50	Eels (<i>Anguilla</i> spp.), smoked, including fillets, caught in freshwater
ex 0305 49 80	Other freshwater fish, smoked, including fillets
ex 0305 59 80	Other freshwater fish, dried, whether or not salted, but not smoked
ex 0305 69 50	Pacific salmon (<i>Oncorhynchus nerka</i> , <i>Oncorhynchus gorbuscha</i> , <i>Oncorhynchus keta</i> , <i>Oncorhynchus tshawytscha</i> , <i>Oncorhynchus kisutch</i> , <i>Oncorhynchus masou</i> and <i>Oncorhynchus rhodurus</i>), Atlantic salmon (<i>Salmo salar</i>) and Danube salmon (<i>Hucho hucho</i>), in brine or salted but not dried or smoked, caught in freshwater
ex 0305 69 80	Other freshwater fish, in brine or salted but not dried or smoked
0306 19 10	Freshwater crayfish, frozen
ex 0306 19 90	Flours, meals and pellets of crustaceans, frozen, fit for human consumption
0306 29 10	Freshwater crayfish, live, fresh, chilled, dried, salted or in brine, in shell, cooked by steaming or by boiling in water, whether or not chilled, dried salted or in brine
ex 0306 29 90	Flours, meals and pellets of crustaceans, not frozen, fit for human consumption
0307 10	Oysters, whether in shell or not, live, fresh, chilled, frozen, dried, salted or in brine
0307 21 00	Scallops, including queen scallops, of the genera <i>Pecten</i> , <i>Chlamys</i> or <i>Placopecten</i> , live, fresh or chilled
0307 29	Scallops, including queen scallops, of the genera <i>Pecten</i> , <i>Chlamys</i> or <i>Placopecten</i> , other than live, fresh or chilled
0307 31	Mussels (<i>Mytilus</i> spp., <i>Perna</i> spp.), live, fresh or chilled
0307 39	Mussels (<i>Mytilus</i> spp., <i>Perna</i> spp.), other than live, fresh or chilled
0307 60 00	Snails, other than sea snails, live, fresh, chilled, frozen, dried, salted or in brine
ex 0307 91 00	Other aquatic invertebrates other than crustaceans and those molluscs specified or included in subheadings 0307 10 10 to 0307 60 00, except <i>Illex</i> spp. and cuttlefish of the species <i>Sepia pharaonis</i> , live, fresh or chilled

Product Code	Product Description
0307 99 13	Striped venus and other species of the family Veneridae, frozen
0307 99 15	Jellyfish (<i>Rhopilema</i> spp.), frozen
ex 0307 99 18	Other aquatic invertebrates other than crustaceans and those molluscs specified or included in subheadings 0307 10 10 to 0307 60 00 and 0307 99 11 to 0307 99 15, except cuttlefish of the species <i>Sepia pharaonis</i> , including flours, meal and pellets of aquatic invertebrates other than crustaceans, fit for human consumption, frozen
ex 0307 99 90	Other aquatic invertebrates other than crustaceans and those molluscs specified or included in subheadings 0307 10 10 to 0307 60 00, except <i>Illex</i> spp. and cuttlefish of the species <i>Sepia pharaonis</i> , including flours, meal and pellets of aquatic invertebrates other than crustaceans, fit for human consumption, dried, salted or in brine
ex 1604 11 00	Salmon, caught in freshwater, prepared or preserved, whole or in pieces, but not minced
ex 1604 19 10	Salmonidae, other than salmon, caught in freshwater, prepared or preserved, whole or in pieces, but not minced
ex 1604 20 10	Salmon, caught in freshwater, otherwise prepared or preserved (other than whole or in pieces, but not minced)
ex 1604 20 30	Salmonidae, other than salmon, caught in freshwater, otherwise prepared or preserved (other than whole or in pieces, but not minced)
ex 1604 19 91	Fillets of freshwater fish, raw, merely coated with batter or breadcrumbs, whether or not pre-fried in oil, frozen
ex 1605 40 00	Freshwater crayfish, prepared or preserved
1605 90 11	Mussels (<i>Mytilus</i> spp., <i>Perna</i> spp.), prepared or preserved, in airtight containers
1605 90 19	Mussels (<i>Mytilus</i> spp., <i>Perna</i> spp.), prepared or preserved, other than in airtight containers
ex 1605 90 30	Scallops, oysters and snails, prepared or preserved
1605 90 90	Other aquatic invertebrates, other than molluscs, prepared or preserved

(* CN codes correspond to Commission Regulation (EC) No 948/2009 (OJ L 287, 31.10.2009).'